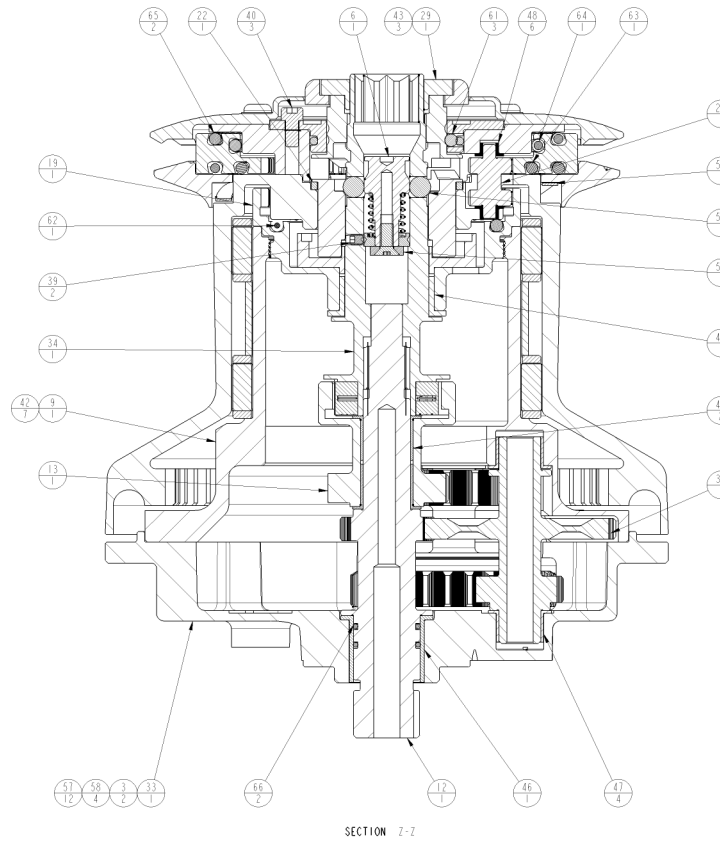
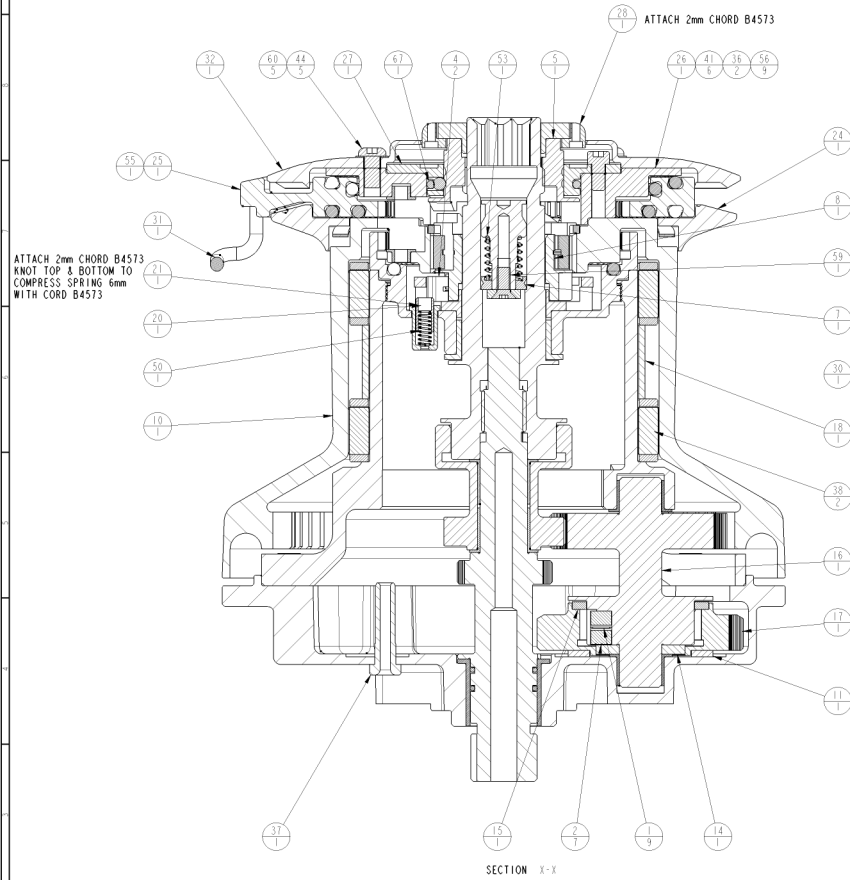


FIRST ANGLE PROJECTION

REMOVE ALL BURRS AND SHARP EDGES

ISSUE	REVISION	MOD No.	DATE
F	SEE MOD NOTE	11159	18-Dec-07



ITEM	PART No.	DESCRIPTION	MATERIAL	SIZE	QTY
67	B8978	O RING	NITRILE	52X3	1
66	B7456	O RING	RUBBER		2
65	B4723.85	BALL ASSEMBLY	TORLON	000	2
64	B4723.75	BALL ASSEMBLY	TORLON	000	1
63	B4723.70	BALL ASSEMBLY	TORLON	000	1
62	B4723.53	BALL ASSEMBLY	TORLON	000	1
61	B4723	3/16" TORLON BALL	TORLON 4204E	3/16"	3
60	B4410	M6 WASHER	NYLATRON	6.4X12.5X0.5	5
59	B4275	POZI - COUNTERSUNK	A2	M5 x 12	1
58	B2423	HELICOIL M8X1.50		304x15	4
57	B2419	HELICOIL M6X1.50		304x15	12
56	B2417	HELICOIL M5X1.50		304x15	9
55	B2415	HELICOIL M4X1.50		304x15	1
54	B1970	WAVE SPRING	STEEL		1
53	B1954	COMPRESSION SPRING	STAINLESS	LC-058H -3SS	1
52	B1652.2	BALL ASSEMBLY	B1652		1
51	B12836	PLASTIC WASHER	NYLON 6	M5	1
50	B12416	COMPRESSION SPRING	S-STEEL		1
49	B12333	IGUS BEARING	TORLON	32X36X15	1
48	B12332	IGUS BEARING	TORLON	05X07X05	6
47	B12330	IGUS BEARING	TORLON	16 X 12	4
46	B12329	IGUS BEARING	TORLON	1"X1"	1
45	B11394	IGUS BEARING	TORLON	18 X 17	2
44	B0852	BUTTON HEAD SCW	TBD	M6X12	5
43	B0757	SOCKET HD_CAP_SCREW	A2_304_305	M4X5	3
42	B0680	SOCKET HD CAP SCREW	A2	M6X20	7
41	B0677	SOCKET HD CAP SCREW	A2	M5X20	6
40	B0675	SOCKET HD CAP SCREW	A2	M5X10	3
39	B0640	GRUB SCREW	STAINLESS	M4x5	2
38	48060001	BEARING ASSEMBLY	AS SHOWN	60	2
37	45099043	ROPE GUIDE	DELRIN		1
36	45099028	HOLLOW DOWEL	30415	5.5X8X8.5	2
35	45060061	RATCHET GEAR - 60	17-4 PH		1
34	45060052	MAIN SPINDLE - 60	FV520B		1
33	45060044	60GPST MACHINING	43060044		1
32	45060043	UPPER CROWN - 60	CARBON FIBRE		1
31	45060041	FEEDER - 60	40004824		1
30	45060030	PAWL RETAINER	DELRIN		1
29	45060029	TOP BUTTON	DELRIN		1
28	45060028	OUTER BUTTON	DELRIN		1
27	45060026	BALL HOUSING	DELRIN		1
26	45060025	UPPER CROWN SUPPORT	6082-T6		1
25	45060024	STRIPPER RING - 60	6082-T6		1
24	45060023	LOWER CROWN - 60	ERTALYTE		1
23	45060022	PLANET GEAR - 60	6082-T6		1
22	45060018	WASHER	DELRIN	5X10	1
21	45060017	PIN	304		1
20	45060016	SPRING HOUSING	304		1
19	45060015	CENTRE STEM TOP - 60	6082-T6		1
18	45060014	SPACER	DELRIN		1
17	45060012	RATCHET GEAR - 60	FV520B		1
16	45060011	PAWL GEAR	FV520B		1
15	45060008	SUPPORT WASHER	DTD197A	41X52X3	1
14	45060007	SUPPORT WASHER	DTD197A		1
13	45060005	RATCHET GEAR	FV520B		1
12	45060004	LOWER SHAFT	FV520B		1
11	45060003	WASHER	DELRIN	38.4X5X2.5	1
10	45060002	DRUM - 60	6082-T6		1
9	45060001	CENTRE STEM - 60	6082-T6		1
8	45005312	LOWER DRIVE	43005308		1
7	45005311	PLUNGER GUIDE	F27114		1
6	45005310	PLUNGER	FV520B		1
5	45005309	UPPER DRIVE	43005308		1
4	45005308	SHORT PAWL - SMALL	SEE NOTE	STD	2
3	15003658	HOLLOW DOWEL	304x15	10X6,5X8.5	2
2	15000094	SUPER PAWL SMALL	ANC 20		7
1	1260.7	PAWL SPRING	STAINLESS	STD	9

SHEET 1 OF 4

MATERIAL AS SHOWN	ALL DIMENSIONS IN mm TOLERANCES (UNLESS STATED) LINEAR ± ANGULAR ±	DRN L. MOORE DATE 20-Dec-06 SCALE 1:1	TITLE 60/3GPST BK WINCH ASSEMBLY PART No. 49060000	LEWMAR
FINISH CLEAN	MODEL NAME: 49060000			

PART No. 49060000

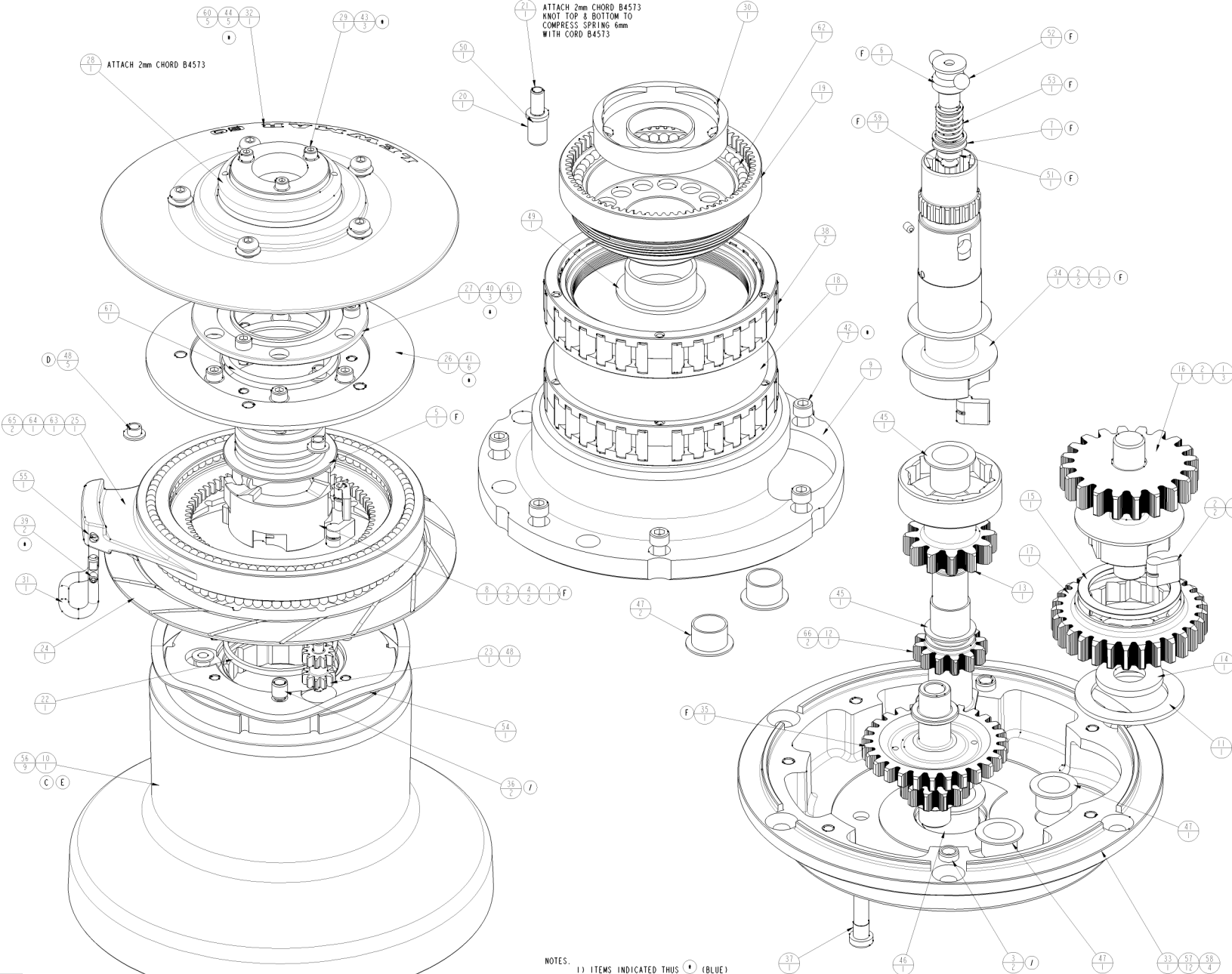


UNLESS OTHERWISE SPECIFIED, MANUFACTURE TO REPRODUCTION OF DRAWING TO WHICH IT APPLIES.

FIRST ANGLE PROJECTION

REMOVE ALL BURRS AND SHARP EDGES

ISSUE	REVISION	MOD No.	DATE
F	SEE MOD NOTE	11159	18-Dec-07



67	B8978	O RING	NITRILE	52X3	1
66	B7456	O RING	RUBBER		2
65	B4723.85	BALL ASSEMBLY	TORLON	000	2
64	B4723.75	BALL ASSEMBLY	TORLON	000	1
63	B4723.70	BALL ASSEMBLY	TORLON	000	1
62	B4723.53	BALL ASSEMBLY	TORLON	000	1
61	B4723	3/16" TORLON BALL	TORLON 4204L	3/16"	3
60	B4410	M6 WASHER	NYLATRON6	4X12.5X0.5	5
59	B4275	POZI - COUNTERSUNK	A2	M5 x 12	1
58	B2423	HELICOLI M8X1.5D		304515	4
57	B2419	HELICOLI M6X1.5D		304515	12
56	B2417	HELICOLI M5X1.5D		304515	9
55	B2415	HELICOLI M4X1.5D		304515	1
54	B1970	WAVE SPRING	STEEL		1
53	B1954	COMPRESSION SPRING	STAINLESS	0586H - 35S1	1
52	B1652.2	BALL ASSEMBLY	B1652		1
51	B12836	PLASTIC WASHER	NYLON 6	M5	1
50	B12416	COMPRESSION SPRING	S-STEEL		1
49	B12333	IGUS BEARING	TORLON	32X36X15	1
48	B12332	IGUS BEARING	TORLON	05X07X05	6
47	B12330	IGUS BEARING	TORLON	16 X 12	4
46	B12329	IGUS BEARING	TORLON	1"X1"	1
45	B11394	IGUS BEARING	TORLON	18 X 17	2
44	B0852	BUTTON HEAD SCW	TBD	M6X12	5
43	B0757	SOCKET HD CAP SCREW	A2_304_305	M4X5	3
42	B0680	SOCKET HD CAP SCREW	A2	M6X20	7
41	B0677	SOCKET HD CAP SCREW	A2	M5X20	6
40	B0675	SOCKET HD CAP SCREW	A2	M5X10	3
39	B0640	GRUB SCREW	STAINLESS	M4x5	2
38	48060001	BEARING ASSEMBLY	AS SHOWN		60
37	45099043	ROPE GUIDE	DELTRIN		1
36	45099028	HOLLOW DOWEL		304515	5.5X8X0.5
35	45060061	RATCHET GEAR - 60		17-4 PH	1
34	45060052	MAIN SPINDLE - 60		FV520B	1
33	45060044	60GPT MACHINING		43060044	1
32	45060043	UPPER CROWN - 60		CARBON FIBRE	1
31	45060041	FEEDER - 60		40004824	1
30	45060030	PAWL RETAINER			1
29	45060029	TOP BUTTON		DELTRIN	1
28	45060028	OUTER BUTTON		DELTRIN	1
27	45060026	BALL HOUSING		DELTRIN	1
26	45060025	UPPER CROWN SUPPORT		6082-16	1
25	45060024	STRIPPER RING - 60		6082-16	1
24	45060023	LOWER CROWN - 60		6082-16	1
23	45060022	PLANET GEAR - 60		6082-16	1
22	45060018	WASHER		DELTRIN	5X10
21	45060017	PIN		304	1
20	45060016	SPRING HOUSING		304	1
19	45060015	CENTRE STEM TOP - 60		6082-16	1
18	45060014	SPACER		DELTRIN	1
17	45060012	RATCHET GEAR - 60		FV520B	1
16	45060011	PAWL GEAR		FV520B	1
15	45060008	SUPPORT WASHER		DTD197A	41X52X3
14	45060007	SUPPORT WASHER		DTD197A	1
13	45060005	RATCHET GEAR		FV520B	1
12	45060004	LOWER SHAFT		FV520B	1
11	45060003	WASHER		DELTRIN	38.4X55X2.5
10	45060002	DRUM - 60		6082-16	1
9	45060001	CENTRE STEM - 60		6082-16	1
8	45005312	LOWER DRIVE		43005308	1
7	45005311	PLUNGER GUIDE		C2114	1
6	45005310	PLUNGER		FV520B	1
5	45005309	UPPER DRIVE		43005308	1
4	45005050	SHORT PAWL - SMALL		SEE NOTE	STD
3	15003658	HOLLOW DOWEL		304515	10X6.5X8.5
2	15000994	SUPER PAWL SMALL		ANC 20	7
1	1260.7	PAWL SPRING		STAINLESS	STD
ITEM	PART No.	DESCRIPTION	MATERIAL	SIZE	QTY

NOTES:
 1) ITEMS INDICATED THIS (BLUE) TO BE SECURED WITH LOCTITE B2602.
 2) ITEMS INDICATED THIS (GREEN) TO BE SECURED WITH LOCTITE B2609.

SHEET 2 OF 4

PART No. 49060000

ORIGINAL SIZE A1

0 10 20 30 40 50

REFERENCE SCALE IN MM

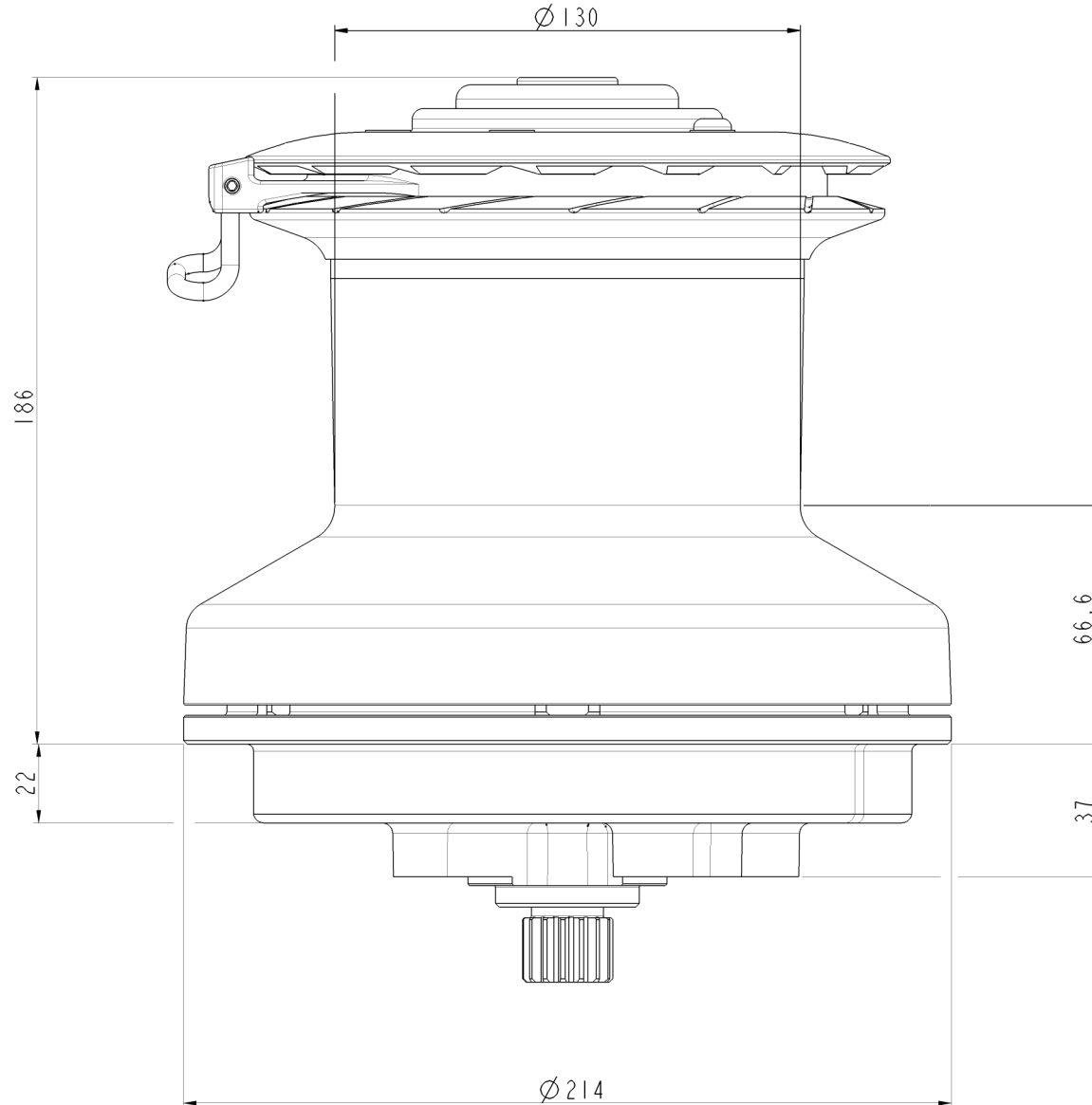
UNLESS OTHERWISE SPECIFIED, ALL DIMENSIONS ARE IN MILLIMETERS

MATERIAL AS SHOWN	ALL DIMENSIONS IN mm	DRN L. MOORE	TITLE 60/3GPST BK WINCH ASSEMBLY
FINISH CLEAN	TOLERANCES (UNLESS STATED) LINEAR ± ANGULAR ±	DATE 21-Dec-06	PART No. 49060000
	SCALE 1:1		LEWMAR
MODEL NAME: 49060000			

FIRST ANGLE PROJECTION

REMOVE ALL BURRS AND SHARP EDGES

ISSUE	REVISION	MOD No.	DATE
F	SEE MOD NOTE	11159	18-Dec-07



ROPE RANGE 8-14mm

1st GEAR RATIO - 1:1

2nd GEAR RATIO - 4.3:1

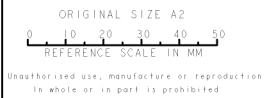
3rd GEAR RATIO - 15.4:1

1st POWER RATIO - 3.9:1

2nd POWER RATIO - 16.8:1

3rd POWER RATIO - 60.2:1

PART No. 49060000



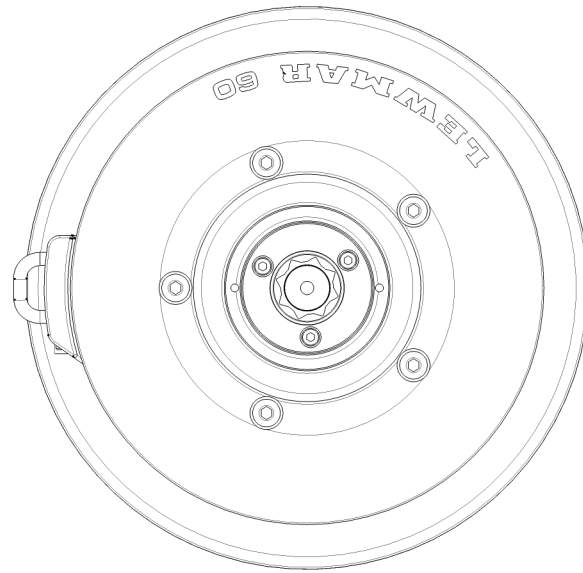
SHEET 3 OF 4

MATERIAL AS SHOWN	ALL DIMENSIONS IN mm	DRN L. MOORE	TITLE 60/3GPST BK WINCH ASSEMBLY	
	TOLERANCES (UNLESS STATED) LINEAR ± ANGULAR ±	DATE 21-Dec-06	SCALE 1:1	PART No. 49060000
FINISH CLEAN	MODEL NAME: 49060000		LEWMAR	

FIRST ANGLE PROJECTION

REMOVE ALL BURRS AND SHARP EDGES

ISSUE	REVISION	MOD No.	DATE
F	SEE MOD NOTE	11159	30-Apr-08



PART No. 49060000

ORIGINAL SIZE A1
 0 10 20 30 40 50
 REFERENCE SCALE IN MM

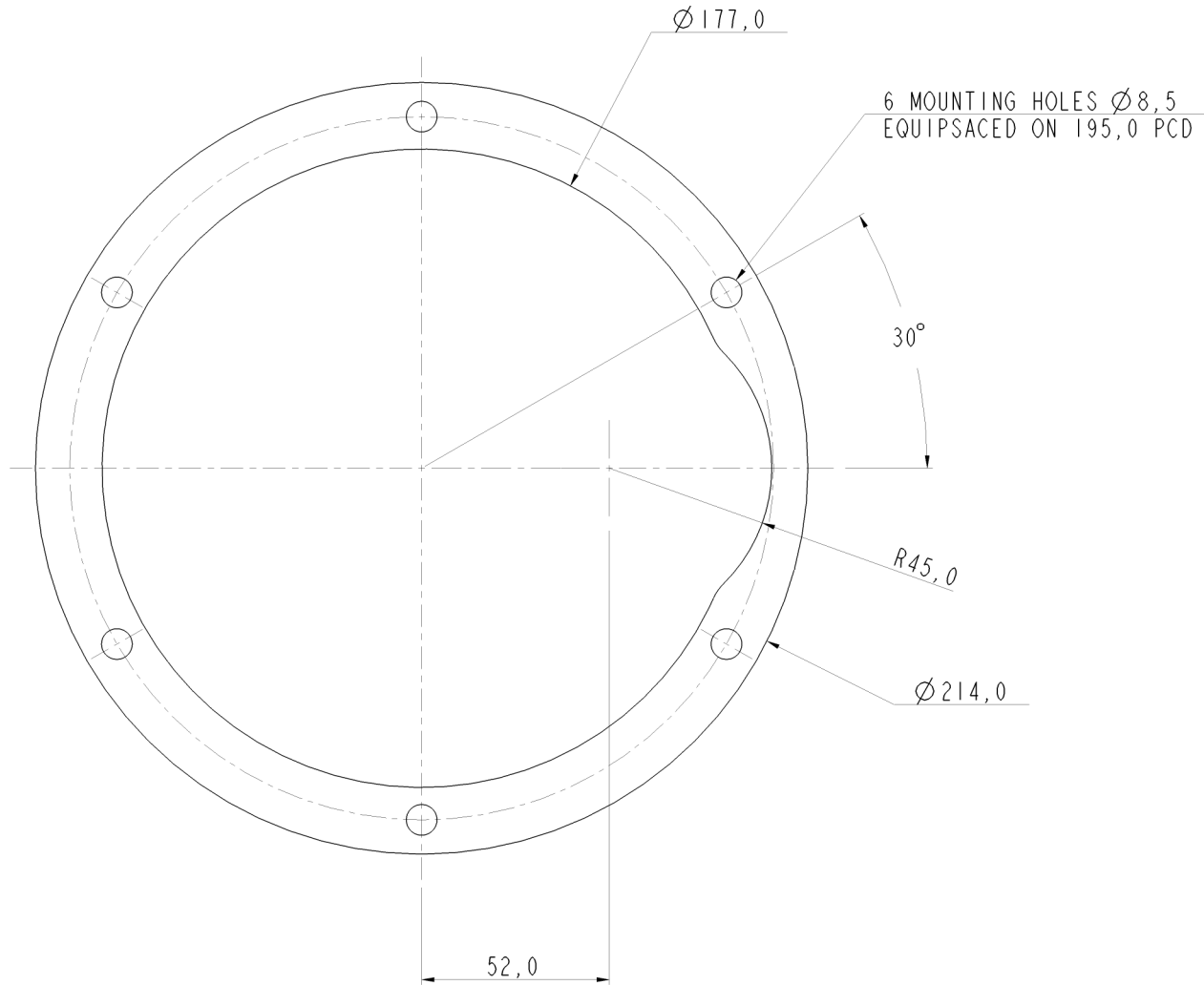
UNLESS OTHERWISE SPECIFIED, MANUFACTURE TO THE DIMENSIONS SHOWN ON THIS DRAWING.
 TO WHAT IS TO BE USED IN PRODUCTION

MATERIAL AS SHOWN	ALL DIMENSIONS IN mm	DRN L. MOORE	TITLE 60/3GPST BK WINCH ASSEMBLY
FINISH CLEAN	TOLERANCES (UNLESS STATED) LINEAR ± ANGULAR ±	DATE 30-Apr-08	PART No. 49060000
	MODEL NAME: 49060000	SCALE 1:1	

FIRST ANGLE PROJECTION

REMOVE ALL BURRS AND SHARP EDGES

ISSUE	REVISION	MOD No.	DATE
F	SEE MOD NOTE	11159	18-Dec-07



PART No. 49060000

ORIGINAL SIZE A2
REFERENCE SCALE IN MM

Unauthorized use, manufacture or reproduction
in whole or in part is prohibited.

SHEET 4 OF 4

MATERIAL AS SHOWN	ALL DIMENSIONS IN mm	DRN L. MOORE	TITLE 60/3GPST BK WINCH ASSEMBLY	
	TOLERANCES (UNLESS STATED) LINEAR \pm ANGULAR \pm	DATE 21-Dec-06	SCALE 1:1	PART No. 49060000
FINISH CLEAN	MODEL NAME: 49060000		LEWMAR	